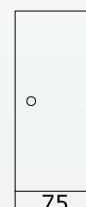
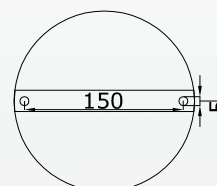
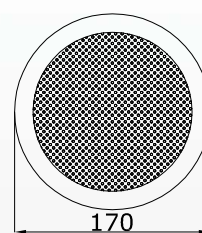




**PARTNER sp. z o.o.**

## DAL 165/10

This surface-mounted ceiling speaker, made of powder-coated metal, shows excellent acoustic characteristics and a high efficiency and therefore it is ideally suited for a wide variety of applications. The mounting brackets allow the installation on ceilings and walls, even where a regular installation would not be possible.



### Specifications

Type	DAL 165/10
Loading rate	10 W
Chassis-type	165 mm full range
Frequency range (-10dB)	225 - 22 200 Hz
SPL 1W/1m	100,6 dB
SPL Pmax/1m	110,6 dB
Radiation angle 1.000 Hz (-10dB)	180°
Transformer	100 V, 10/6/3/1,5 Watt
Dimensions	Ø170 x 75 mm/ installation depth
Weight	1,4 kg
Material	powder-coated, steel panel
Connection	2 -pole compression clamp
Colour	RAL-9010 White/special colouring is possible for a surcharge
Packing unit	8