

Installation manual

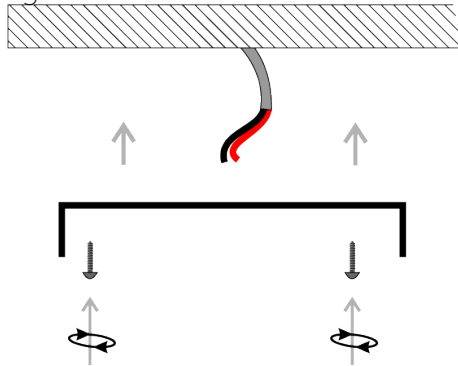
DAL 165/6 PP vD

DAL 165/10 PP vD

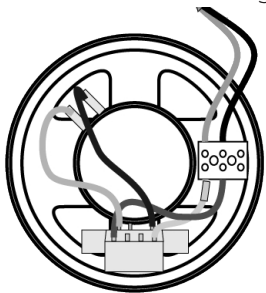


PARTNER sp. z o.o.

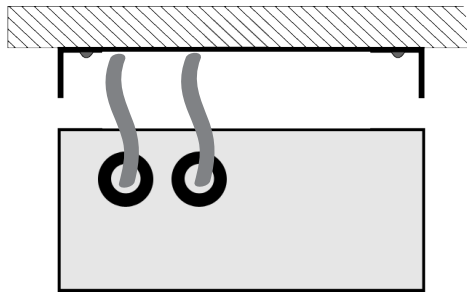
- 1** After unpacking of the cartoon, install (screw) the rear mounting plate to the wall or ceiling.



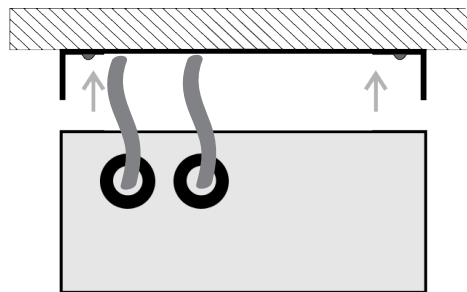
- 3** Connect the cables serially, then screw to the ceramic cube. Due to the use of one ceramic cube, each of lines, input and output wire, should be connected using end sleeve.



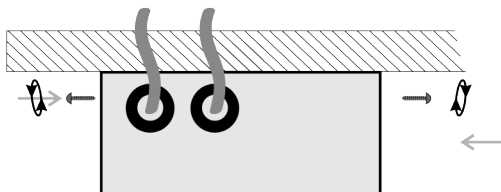
- 2** Pull the speaker line cables through the two rubber glands on the side of the loudspeaker cabinet (input and output separately).



- 5** Attach the housing to the ceiling and adjust the holes to insert screws.

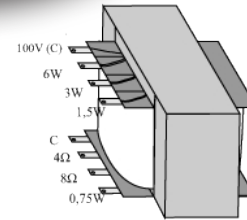
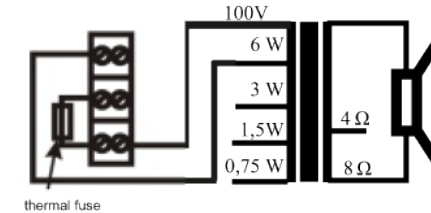


- 6** Screw the screws to the loudspeaker round housing.

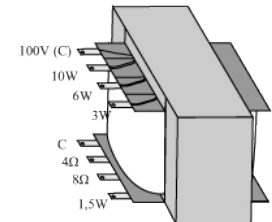
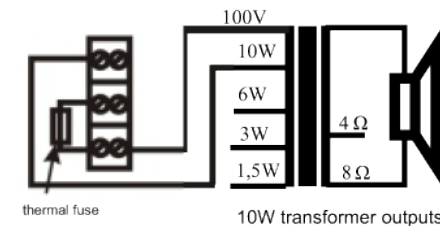


- 4** Select proper tapings (following system design) and connect cables to the transformer selecting proper power – look at the scheme of electrical connection.

Scheme with the 6W transformer connections



Scheme with the 10W transformer connections



SAFETY PRECAUTIONS:

1. After unpacking, check the speaker and its enclosure for damage;
2. Read this installation manual carefully before starting installation process – consider installation options from this instruction – depending on the number of wires in the cable line or the line control method;
3. Check if fitting method (ceiling, wall, pendant etc) complies with EN 54 certificate, catalogue data or local approval if concerns;
4. Install the speaker only in a location that can structurally support the full weight of the unit and mounting bracket;
5. Do not use other methods than specified to install the speaker. Ensure that all screws are securely tightened. Do not mount the speaker in locations exposed to constant vibration. Not keeping higher above rules may cause the speaker could fall down, possibly resulting in personal injury;
6. When connecting speaker line cables check also if the power tap selected on the transformer is the correct one – follow system design. Change if necessary.
7. Make sure amplifier's power is switched off when connecting the speakers, to avoid electric shocks.

www.partneraudio.eu

